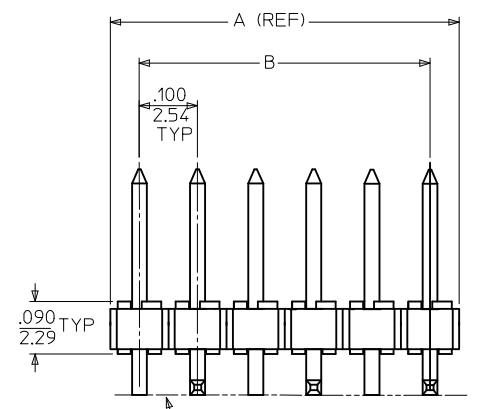
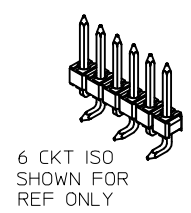
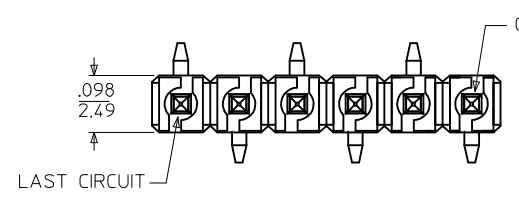
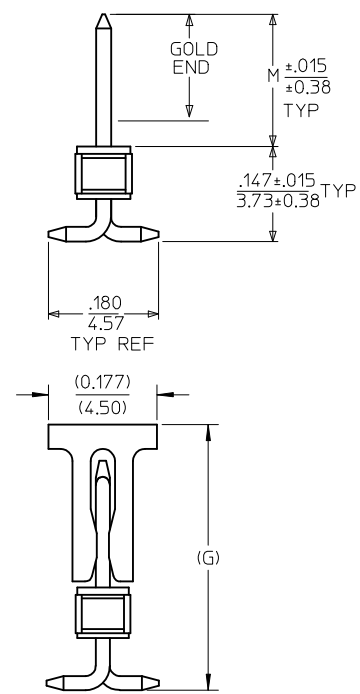


	10	9	8	7	6	5	4	3	2	1	
F	NO. OF CKTS	A	B								
	**2	.200 5.08									
3		.300	.200								
	4	.400	.300								
5		.500	.400								
	6	.600	.500								
7		.700	.600								
	8	.800	.700								
E		.900	.800								
	9	1.000	.900								
10		1.100	1.000								
	11	1.200	1.100								
12		1.300	1.200								
	13	1.400	1.300								
D		1.500	1.400								
	14	1.600	1.500								
15		1.700	1.600								
	16	1.800	1.700								
17		1.900	1.800								
	18	2.000	1.900								
C		2.100	2.000								
	19	2.200	2.100								
20		2.300	2.200								
	21	2.400	2.300								
B		2.400	2.300								
	22	2.400	2.300								

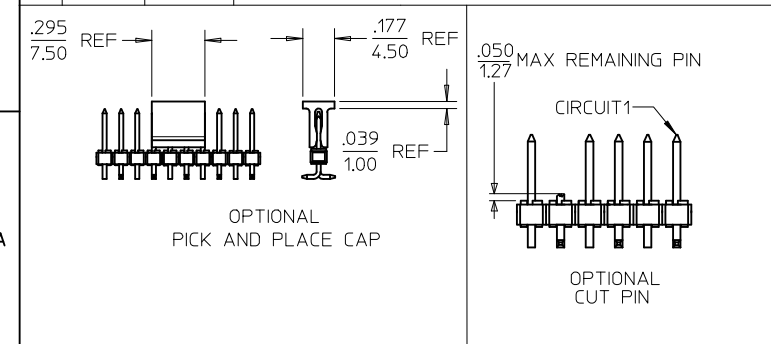
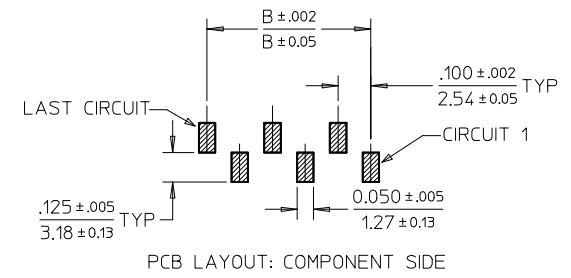


CKTS	COPLANARITY
2-6	.006/(0.15)
7-14	.010/(0.25)
15-24	.012/(0.30)



NOTES:

- MATERIAL:
HOUSING: NYLON 46, GLASS FILLED, UL94V-0, COLOR: BLACK
PIN: .025/0.64 SQ PIN, PHOSPHOR BRONZE
- FINISH:
A - *(154) OVERALL TIN: THICKNESS = .000100/0.00254 MIN
B - (208) SELECTIVE GOLD IN CONTACT AREA: THICKNESS = .000015/0.00038 MIN
C - (228) SELECTIVE GOLD IN CONTACT AREA: THICKNESS = .000030/0.00076 MIN.
* SELECTIVE TIN IN PC TAIL AREA: THICKNESS = .000100/0.00254 MIN
OVERALL NICKEL UNDERPLATE: .000050/0.00127 MIN
* THE PRIMARY SHIPPING CARTON WILL BE LABELED, 'COMPLIANT TO RoHS DIRECTIVE 2002/95/EC AND ELV ANNEX II OF DIRECTIVE 2000/53/EC', AND CARTONS WITHOUT THIS LABEL MAY CONTAIN PRODUCT WITH TIN LEAD.
- PRODUCT SPEC: PS-87920-019
- PACKAGING INFORMATION:
TUBE PACK : PK-89990-514
TAPE & REEL : PK-68300-001
- PARTS ARE NOT STACKABLE ON .100/2.54 CENTERS.
- TWO CKT PARTS WILL REQUIRE SUPPORT DURING THE SOLDER PROCESS.
- PLEASE CONTACT SALES/ FACTORY FOR TOOLING ACTIVATION OF TAPE & REEL PACKAGING.



PDR#1871, ADD 68301160
EC NO: S2009-0269
DRWN: YMC HONG 2008/10/15
CHKD: SKANG 2008/10/16
APPR: MLONG 2008/10/16

QUALITY SYMBOLS
▽=0
∇=0

DESCRIPTION

REV

GENERAL TOLERANCES (UNLESS SPECIFIED)

	mm	INCH
4 PLACES	± ---	± ---
3 PLACES	± ---	± .005
2 PLACES	± 0.13	± .010
1 PLACE	± 0.25	± ---

ANGULAR ±1/2°

DRAFT WHERE APPLICABLE MUST REMAIN WITHIN DIMENSIONS

DIMENSION STYLE
IN/MM

SCALE
NTS

DESIGN UNITS
INCH

THIRD ANGLE PROJECTION

DRAWN BY
SAMIAC

DATE
2000/10/28

CHECKED BY
SAMIAC

DATE
2000/10/28

APPROVED BY
EDGLE Y

DATE
2000/10/28

MATERIAL NO.
SEE TABLE

SIZE
A3

TITLE
CUSTOM HEADER
.100/(2.54) CENTERLINE
VERTICAL/SMT SINGLE ROW

MOLEX INCORPORATED

DOCUMENT NO.
SD-68301-001

SHEET NO.
1 OF 5


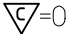
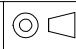

THIS DRAWING CONTAINS INFORMATION THAT IS PROPRIETARY TO MOLEX INCORPORATED AND SHOULD NOT BE USED WITHOUT WRITTEN PERMISSION

10	9	8	7	6	5	4	3	2	1	
MATERIAL NO	PIN NO	OPTIONAL SUB ASSY	PLT REF	DIM M	DIM G	CKT SIZE	VOID CKT #	KINKED PIN	PICK & PLACE CAP	CUT PIN CKT NO.
F 68301-1007	42663-ABA154	42375-0010	154	.240 6.10	.433 10.99	10	NONE	NONE	YES	-
68301-1109	42663-AWA154	42375-0115	154	.320 8.13	-	10	NONE	NONE	-	-
68301-1159	42663-AWA154	42375-0116	154	.320 8.13	.513 13.02	11	NONE	NONE	YES	-
68301-1063	42663-ABA154	-	154	.240 6.10	-	12	NONE	NONE	-	-
68301-1111	42663-AWA154	42375-0117	154	.320 8.13	-	12	NONE	NONE	-	-
68301-1157	42663-DMB208	NONE	208	.605 15.37	-	12	NONE	NONE	-	-
E 68301-1065	42663-ABA154	42375-0014	154	.240 6.10	-	14	NONE	NONE	-	-
68301-1129	42663-AWB208	42375-0154	208	.320 8.13	-	14	NONE	NONE	-	-
68301-1113	42663-AWA154	42375-0121	154	.320 8.13	-	14	NONE	NONE	-	-
68301-1066	42663-ABA154	42375-0015	154	.240 6.10	-	15	NONE	NONE	-	-
68301-1067	42663-ABA154	42375-0016	154	.240 6.10	-	16	NONE	NONE	-	-
68301-1115	42663-AWA154	42375-0121	154	.320 8.13	-	16	NONE	NONE	-	-
D 68301-1069	42663-ABA154	42375-0018	154	.240 6.10	-	18	NONE	NONE	-	-
68301-1117	42663-AWA154	42375-0123	154	.320 8.13	-	18	NONE	NONE	-	-
68301-1119	42663-AWA154	42375-0125	154	.320 8.13	-	20	NONE	NONE	-	-
68301-1071	42663-ABA154	42375-0020	154	.240 6.10	-	20	NONE	NONE	-	-
68301-1072	42663-ABA154	42375-0021	154	.240 6.10	-	21	NONE	NONE	-	-
68301-1123	42663-AWA154	42375-0129	154	.320 8.13	-	24	NONE	NONE	-	-
C										

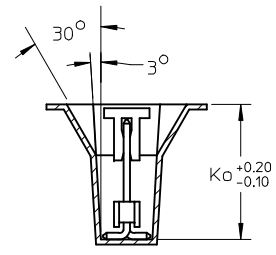
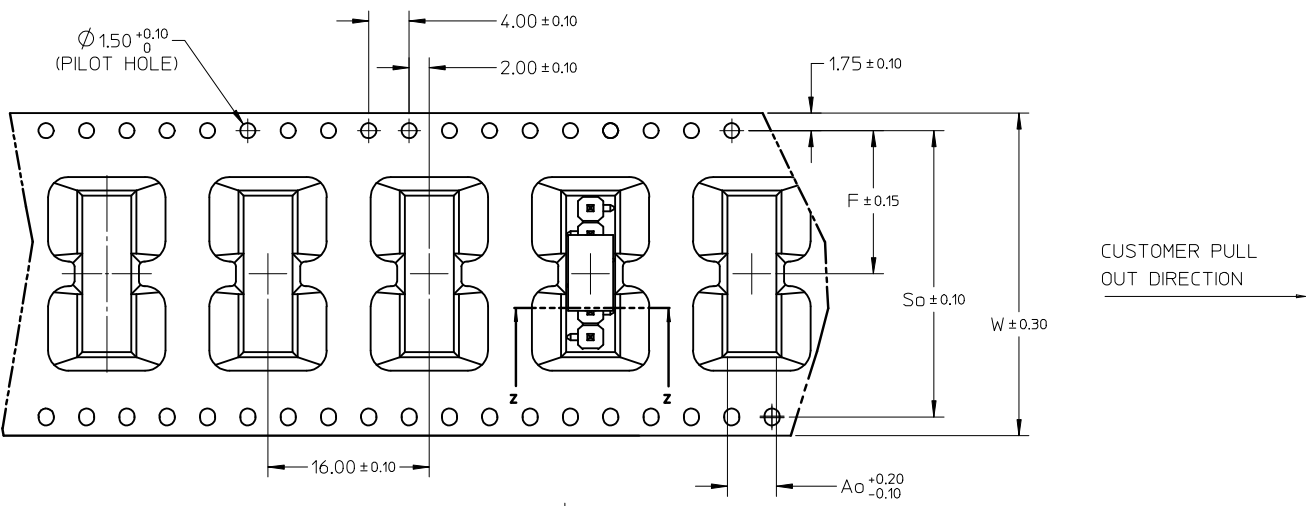
B										
---	--	--	--	--	--	--	--	--	--	--

A	PDR#1871, ADD 68301160 EC NO: S2009-0269 DRWN: YCHONG 2008/10/15 CHKD: SKANG 2008/10/16 APPR: MLONG 2008/10/16	QUALITY SYMBOLS	GENERAL TOLERANCES (UNLESS SPECIFIED)	DIMENSION STYLE	SCALE	DESIGN UNITS	THIRD ANGLE PROJECTION																											
		= 0 = 0	<table border="1"> <tr> <th></th> <th>mm</th> <th>INCH</th> </tr> <tr> <td>4 PLACES</td> <td>± ---</td> <td>± ---</td> </tr> <tr> <td>3 PLACES</td> <td>± ---</td> <td>± .005</td> </tr> <tr> <td>2 PLACES</td> <td>± 0.13</td> <td>± .010</td> </tr> <tr> <td>1 PLACE</td> <td>± 0.25</td> <td>± ---</td> </tr> </table>		mm	INCH	4 PLACES	± ---	± ---	3 PLACES	± ---	± .005	2 PLACES	± 0.13	± .010	1 PLACE	± 0.25	± ---	<table border="1"> <tr> <th>IN/MM</th> <th>DATE</th> <th>TITLE</th> </tr> <tr> <td>DRAWN BY</td> <td>2000/10/28</td> <td rowspan="4">CUSTOM HEADER .100/(2.54) CENTERLINE VERTICAL/SMT SINGLE ROW MOLEX INCORPORATED</td> </tr> <tr> <td>CHECKED BY</td> <td>2000/10/28</td> </tr> <tr> <td>APPROVED BY</td> <td>2000/10/28</td> </tr> <tr> <td>EDGLE Y</td> <td>2000/10/28</td> </tr> </table>	IN/MM	DATE	TITLE	DRAWN BY	2000/10/28	CUSTOM HEADER .100/(2.54) CENTERLINE VERTICAL/SMT SINGLE ROW MOLEX INCORPORATED	CHECKED BY	2000/10/28	APPROVED BY	2000/10/28	EDGLE Y	2000/10/28	NTS	INCH	
			mm	INCH																														
		4 PLACES	± ---	± ---																														
3 PLACES	± ---	± .005																																
2 PLACES	± 0.13	± .010																																
1 PLACE	± 0.25	± ---																																
IN/MM	DATE	TITLE																																
DRAWN BY	2000/10/28	CUSTOM HEADER .100/(2.54) CENTERLINE VERTICAL/SMT SINGLE ROW MOLEX INCORPORATED																																
CHECKED BY	2000/10/28																																	
APPROVED BY	2000/10/28																																	
EDGLE Y	2000/10/28																																	
DRAFT WHERE APPLICABLE MUST REMAIN WITHIN DIMENSIONS	SEE TABLE THIS DRAWING CONTAINS INFORMATION THAT IS PROPRIETARY TO MOLEX INCORPORATED AND SHOULD NOT BE USED WITHOUT WRITTEN PERMISSION	MATERIAL NO. DOCUMENT NO.	SHEET NO. 2 OF 5																															

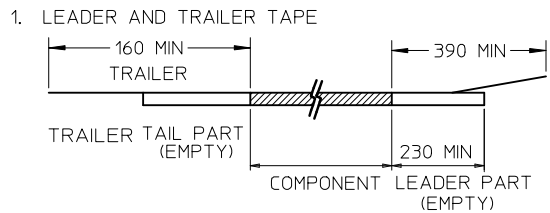
	10	9	8	7	6	5	4	3	2	1
	MATERIAL NO	PIN NO	OPTIONAL SUB ASSY	PLT REF	DIM M	CKT SIZE	VOID CKT #	KINKED PIN	PICK & PLACE CAP	CUT PIN CKT NO.
F	68301-1054	42663-ABA154	42375-0002	154	.240 6.10	2	NONE	NONE	-	-
	68301-1055	42663-ABB208	42375-0037	208	.240 6.10	2	NONE	NONE	-	-
	68301-1056	42663-ABB228	42375-0072	228	.240 6.10	2	NONE	NONE	-	-
	68301-1051	42663-AWA154	42375-0107	154	.320 8.13	2	NONE	NONE	-	-
	68301-1009	42663-ABB208	42375-0038	208	.240 6.10	3	NONE	NONE	-	-
	68301-1014	42663-ABA154	42375-0003	154	.240 6.10	3	NONE	NONE	-	-
E	68301-1020	42663-ABB228	42375-0073	228	.240 6.10	3	NONE	NONE	-	-
	68301-1031	42663-AWA154	42375-0108	154	.320 8.13	3	NONE	NONE	-	-
	68301-1037	42663-AWB208	42375-0143	208	.320 8.13	3	NONE	NONE	-	-
	68301-1010	42663-ABB208	42375-0039	208	.240 6.10	4	NONE	NONE	-	-
	68301-1015	42663-ABA154	42375-0004	154	.240 6.10	4	NONE	NONE	-	-
	68301-1021	42663-ABB228	42375-0074	228	.240 6.10	4	NONE	NONE	-	-
D	68301-1032	42663-AWA154	42375-0109	154	.320 8.13	4	NONE	NONE	-	-
	68301-1038	42663-AWB208	42375-0144	208	.320 8.13	4	NONE	NONE	-	-
	68301-1006	42663-ABB208	42375-0040	208	.240 6.10	5	NONE	NONE	-	-
	68301-1016	42663-ABA154	42375-0005	154	.240 6.10	5	NONE	NONE	-	-
	68301-1033	42663-AWA154	42375-0110	154	.320 8.13	5	NONE	NONE	-	-
	68301-1039	42663-AWB208	42375-0145	208	.320 8.13	5	NONE	NONE	-	-

PDR#1871, ADD 68301160 EC NO: S2009-0269 DRWN: YCHONG 2008/10/15 CHKD: SKANG 2008/10/16 APPR: MLONG 2008/10/16	QUALITY SYMBOLS	GENERAL TOLERANCES (UNLESS SPECIFIED)	DIMENSION STYLE	SCALE	DESIGN UNITS	THIRD ANGLE PROJECTION																													
	 = 0  = 0.005	<table border="1"> <tr> <th></th> <th>mm</th> <th>INCH</th> </tr> <tr> <td>4 PLACES</td> <td>± ---</td> <td>± ---</td> </tr> <tr> <td>3 PLACES</td> <td>± ---</td> <td>± .005</td> </tr> <tr> <td>2 PLACES</td> <td>± 0.13</td> <td>± .010</td> </tr> <tr> <td>1 PLACE</td> <td>± 0.25</td> <td>± ---</td> </tr> </table>		mm	INCH	4 PLACES	± ---	± ---	3 PLACES	± ---	± .005	2 PLACES	± 0.13	± .010	1 PLACE	± 0.25	± ---	<table border="1"> <tr> <th colspan="2">IN/MM</th> </tr> <tr> <td>DRAWN BY</td> <td>DATE</td> </tr> <tr> <td>SAMIAC</td> <td>2000/10/28</td> </tr> <tr> <td>CHECKED BY</td> <td>DATE</td> </tr> <tr> <td>SAMIAC</td> <td>2000/10/28</td> </tr> <tr> <td>APPROVED BY</td> <td>DATE</td> </tr> <tr> <td>EDGLEJ</td> <td>2000/10/28</td> </tr> </table>	IN/MM		DRAWN BY	DATE	SAMIAC	2000/10/28	CHECKED BY	DATE	SAMIAC	2000/10/28	APPROVED BY	DATE	EDGLEJ	2000/10/28	NTS	INCH	
		mm	INCH																																
	4 PLACES	± ---	± ---																																
3 PLACES	± ---	± .005																																	
2 PLACES	± 0.13	± .010																																	
1 PLACE	± 0.25	± ---																																	
IN/MM																																			
DRAWN BY	DATE																																		
SAMIAC	2000/10/28																																		
CHECKED BY	DATE																																		
SAMIAC	2000/10/28																																		
APPROVED BY	DATE																																		
EDGLEJ	2000/10/28																																		
DESCRIPTION	DRAFT WHERE APPLICABLE MUST REMAIN WITHIN DIMENSIONS	MATERIAL NO. SEE TABLE	TITLE CUSTOM HEADER .100/(2.54) CENTERLINE VERTICAL/SMT SINGLE ROW	 MOLEX INCORPORATED	SHEET NO. 3 OF 5	DOCUMENT NO. SD-68301-001	THIS DRAWING CONTAINS INFORMATION THAT IS PROPRIETARY TO MOLEX INCORPORATED AND SHOULD NOT BE USED WITHOUT WRITTEN PERMISSION																												

CKT SIZE	QTY/ REEL	A ₀	K ₀	F	S ₀	W
6	230	4.85	13.40	14.20	28.40	32.00
10	230	4.90	11.30	20.20	40.40	44.00



NOTES:



2. PEELING OFF FORCE OF THE TOP TAPE: 60gf MAX.
(PEELING DIRECTION AS SHOWN IN FOLLOWING FIGURE)



3. THE TAPE IS TREATED FOR ANTI ESD
4. PACKAGING STANDARD AS PER EIA-481.
5. ABOVE PACKAGING ILLUSTRATION IS FOR 6CKT ONLY.

PDR#1871, ADD 68301160 EC NO: S2009-0269 DRWN:YMCCHONG 2008/10/15 CHKD:SKANG 2008/10/16 APPR:MLONG 2008/10/16	QUALITY SYMBOLS	GENERAL TOLERANCES (UNLESS SPECIFIED)	DIMENSION STYLE	SCALE	DESIGN UNITS	THIRD ANGLE PROJECTION
	▽=0 ◻=0	mm INCH 4 PLACES ± --- ± --- 3 PLACES ± --- ± .005 2 PLACES ± 0.13 ± .010 1 PLACE ± 0.25 ± --- ANGULAR ± 1/2°	IN/MM	NTS	INCH	

M4	DESCRIPTION	DRAFT WHERE APPLICABLE MUST REMAIN WITHIN DIMENSIONS
	REV	

DRAWN BY	DATE	TITLE
SAMIAC	2000/10/28	CUSTOM HEADER .100/(2.54) CENTERLINE VERTICAL/SMT SINGLE ROW
CHECKED BY	DATE	
SAMIEC	2000/10/28	MOLEX INCORPORATED
APPROVED BY	DATE	
EDGLE	2000/10/28	
MATERIAL NO.	DOCUMENT NO.	
SEE TABLE	SD-68301-001	
SIZE A3	THIS DRAWING CONTAINS INFORMATION THAT IS PROPRIETARY TO MOLEX INCORPORATED AND SHOULD NOT BE USED WITHOUT WRITTEN PERMISSION	

SHEET NO.	5 OF 5
-----------	--------